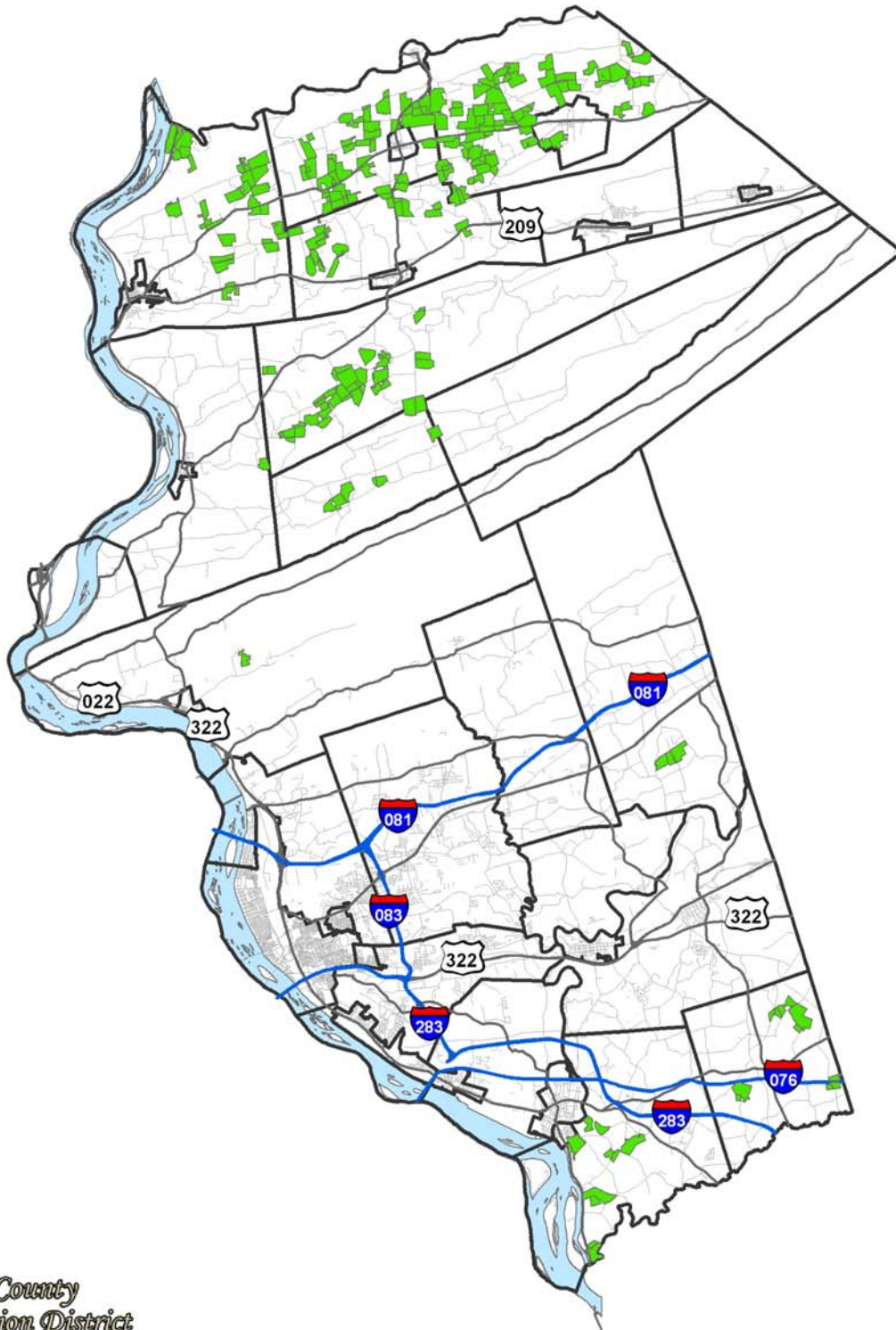


# Dauphin County Agriculture Land Preservation Easements



## Ag Land Preservation Program:

DCCD administers Dauphin County's Agricultural Land Preservation (ALP) Program, a statewide program originated by the Pennsylvania Department of Agriculture. The ALP program preserves farmland in perpetuity through the purchase of Agricultural Conservation Easements, with the intent of ensuring that future generations have ample farmland available to meet their needs.



Created by the Dauphin County Conservation District: 2/22/2011.  
 Shapefiles provided by Dauphin County GIS and the DCCD.  
 Ag Land Easements are added to the map on a yearly basis. The document is meant for educational purposes and its accuracy should not be relied upon.

## Map Legend

- |   |   |
|---|---|
|  Ag Easements         |  Interstates |
|  Municipal Boundaries |  State Roads |
|  Susquehanna River    |  Streets     |